



PORTLAND SQUARE

ALL ENQUIRIES TO FINE & COUNTRY, 50 WARWICK ROAD, 01228 583109
[FINEANDCOUNTRY.COM/UK/NORTH-CUMBRIA](https://www.fineandcountry.com/uk/north-cumbria)



HALSTON HOMES



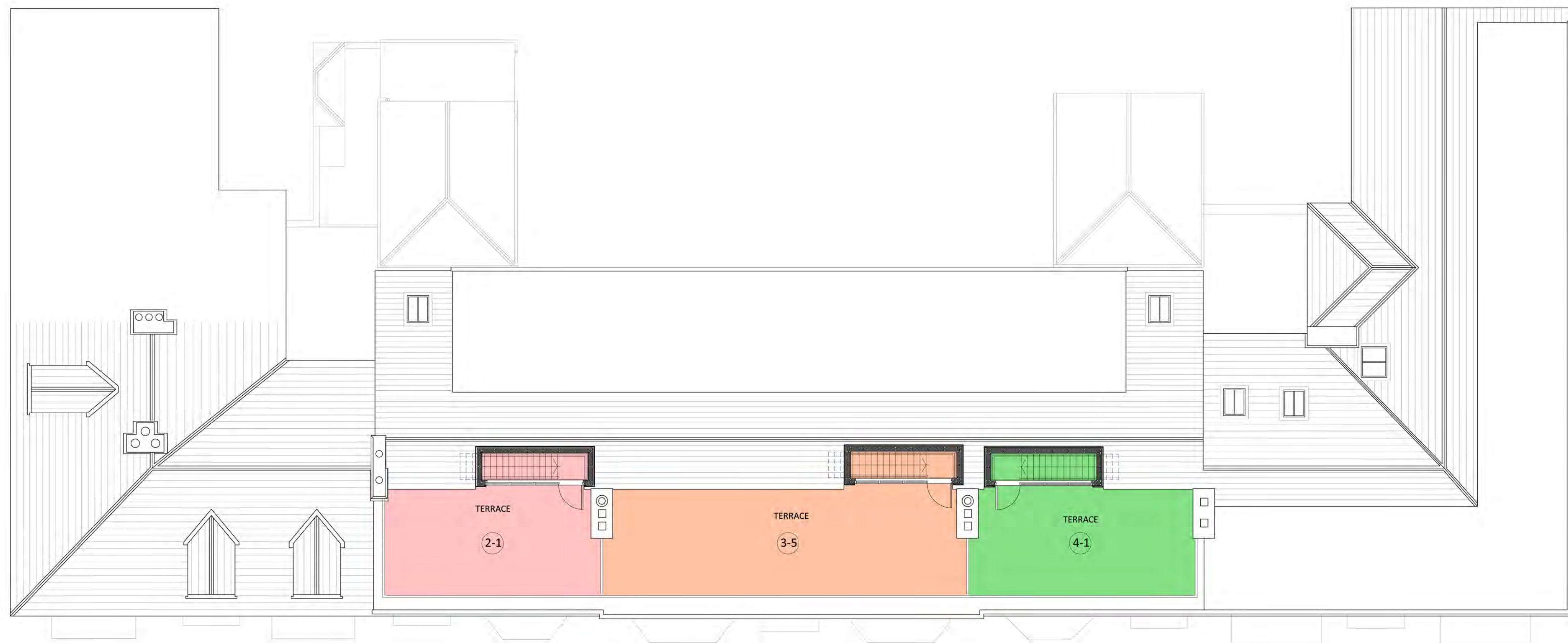
- DWELLING 1-1**
Four Story, 5 bedroom Townhouse, GIA - 358.9m²
(Basement Level GIA - 71.3m²)
(Ground Floor GIA - 123.0m²)
(First Floor GIA - 122.8m²)
(Second Floor GIA - 88.6m²)
- DWELLING 2-1**
Four Story, 4 bedroom Townhouse, GIA - 395.1m²
(Basement Level GIA - 85.1m²)
(Ground Floor GIA - 105.2m²)
(First Floor GIA - 117.9m²)
(Second Floor GIA - 86.9m²)
- DWELLING 3-1**
1 bedroom Flat, GIA - 59.0m²
(Ground Floor GIA - 59.0m²)
- DWELLING 3-2**
1 bedroom Flat, GIA - 58.2m²
(Ground Floor GIA - 58.2m²)
- DWELLING 3-3**
1 bedroom Flat, GIA - 58.0m²
(First Floor GIA - 58.0m²)
- DWELLING 3-4**
1 bedroom Flat, GIA - 57.7m²
(First Floor GIA - 57.7m²)
- DWELLING 3-5**
'Penthouse', 3 bedroom, GIA - 143.0m²
(Second Floor GIA - 143.0m²)
- DWELLING 4-1**
Four Story, 4 bedroom Townhouse, GIA - 436.64m²
(Basement Level GIA - 100.0m²)
(Ground Floor GIA - 123.2m²)
(First Floor GIA - 120.8m²)
(Second Floor GIA - 92.6m²)
- DWELLING 5-1**
Four Story, 2 bedroom Townhouse, GIA - 190.1m²
(Basement Level GIA - 48.3m²)
(Ground Floor GIA - 66.3m²)
(First Floor GIA - 38.5m²)
(Second Floor GIA - 37.2m²)
- DWELLING 5-2**
2 Bedroom, Single Story Flat, GIA - 95.0m²
(Ground Floor GIA - 95.0m²)
- DWELLING 5-3**
2 Bedroom, Single Story Flat, GIA - 84.8m²
(First Floor GIA - 84.8m²)
- DWELLING 5-4**
2 Bedroom, Single Story Flat, GIA - 122.0m²
(Second Floor GIA - 122.0m²)
- DWELLING 6-1**
Four Story, 3 bedroom Townhouse, GIA - 193.4m²
(Basement Level GIA - 50.0m²)
(Ground Floor GIA - 50.5m²)
(First Floor GIA - 48.9m²)
(Second Floor GIA - 44.0m²)

OVERALL SCHEDULE OF ACCOMMODATION

- 1 Bedroom Flat - 4no
- 2 Bedroom Flat - 3no
- 3 Bedroom 'Penthouse' Flat - 1no
- 2 Bedroom Townhouse - 2no
- 5 Bedroom Townhouse - 1no
- 4 Bedroom Townhouse - 2no
- 1 Bedroom Annexe - 2no

Total - 15no Dwellings





PROPOSED - SECOND FLOOR PLAN



PROPOSED - SECOND FLOOR PLAN

- DWELLING 1-1**
Four Story, 5 bedroom Townhouse, GIA - 358.9m²
(Basement Level GIA - 71.3m²)
(Ground Floor GIA - 123.0m²)
(First Floor GIA - 122.8m²)
(Second Floor GIA - 88.6m²)
- DWELLING 2-1**
Four Story, 4 bedroom Townhouse, GIA - 395.1m²
(Basement Level GIA - 85.1m²)
(Ground Floor GIA - 105.2m²)
(First Floor GIA - 117.9m²)
(Second Floor GIA - 86.9m²)
- DWELLING 3-1**
1 bedroom Flat, GIA - 59.0m²
(Ground Floor GIA - 59.0m²)
- DWELLING 3-2**
1 bedroom Flat, GIA - 58.2m²
(Ground Floor GIA - 58.2m²)
- DWELLING 3-3**
1 bedroom Flat, GIA - 58.0m²
(First Floor GIA - 58.0m²)
- DWELLING 3-4**
1 bedroom Flat, GIA - 57.7m²
(First Floor GIA - 57.7m²)
- DWELLING 3-5**
'Penthouse', 3 bedroom, GIA - 143.0m²
(Second Floor GIA - 143.0m²)
- DWELLING 4-1**
Four Story, 4 bedroom Townhouse, GIA - 436.64m²
(Basement Level GIA - 100.0m²)
(Ground Floor GIA - 123.2m²)
(First Floor GIA - 120.8m²)
(Second Floor GIA - 92.6m²)
- DWELLING 5-1**
Four Story, 2 bedroom Townhouse, GIA - 190.1m²
(Basement Level GIA - 48.3m²)
(Ground Floor GIA - 66.3m²)
(First Floor GIA - 38.5m²)
(Second Floor GIA - 37.2m²)
- DWELLING 5-2**
2 Bedroom, Single Story Flat, GIA - 95.0m²
(Ground Floor GIA - 95.0m²)
- DWELLING 5-3**
2 Bedroom, Single Story Flat, GIA - 84.8m²
(First Floor GIA - 84.8m²)
- DWELLING 5-4**
2 Bedroom, Single Story Flat, GIA - 122.0m²
(Second Floor GIA - 122.0m²)
- DWELLING 6-1**
Four Story, 3 bedroom Townhouse, GIA - 193.4m²
(Basement Level GIA - 50.0m²)
(Ground Floor GIA - 50.5m²)
(First Floor GIA - 48.9m²)
(Second Floor GIA - 44.0m²)

OVERALL SCHEDULE OF ACCOMMODATION

- 1 Bedroom Flat - 4no
- 2 Bedroom Flat - 3no
- 3 Bedroom 'Penthouse' Flat - 1no
- 2 Bedroom Townhouse - 2no
- 5 Bedroom Townhouse - 1no
- 4 Bedroom Townhouse - 2no
- 1 Bedroom Annexe - 2no

Total - 15no Dwellings





FRONT ELEVATION, 1-5 PORTLAND SQUARE



SIDE ELEVATION, BRUNSWICK STREET



SIDE ELEVATION, ALFRED STREET NORTH



